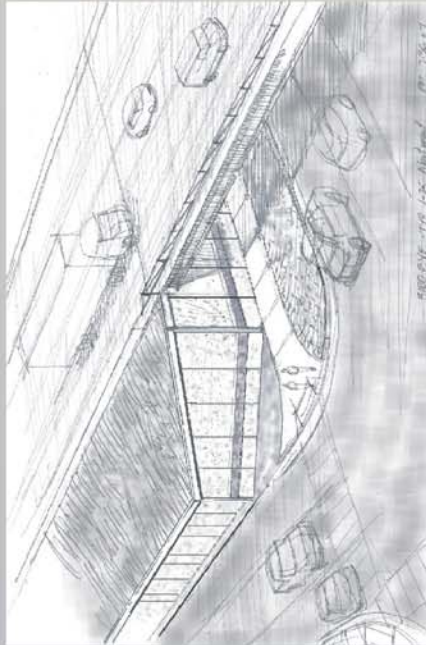
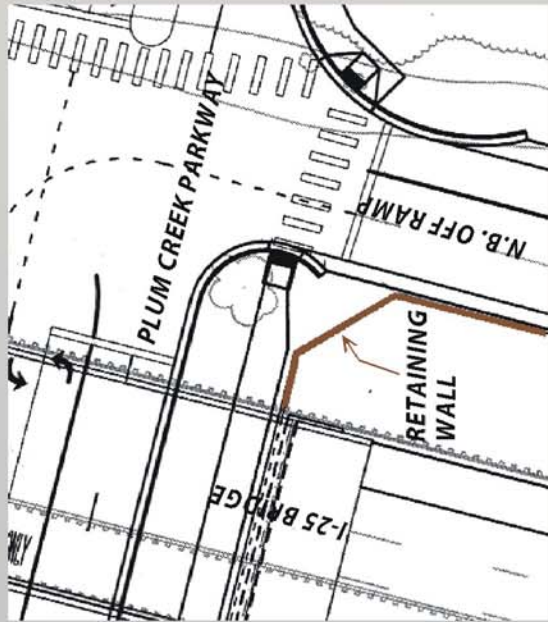


There are two concrete retaining wall panel types; one with only one texture finish and a second panel type used at the bridge abutment with a stone masonry texture 'band'. The band feature is at a continuous elevation near the ramp intersections as shown in these sketches. The band extends approx 4 ft to 7 ft above the sidewalk but varies slightly as the roadway profile changes.



Bird's eye perspective showing preferred configuration of retaining walls near the bridge abutment. This is the south east corner, the other 4 corners are similar. Note how the band pattern extends along the angled corner.

Below: plan view of the southeast I-25 bridge corner showing 45 degree corner of retaining wall.



Elevation view to the south showing transition of abutment area walls to ramp wall. Band is at a continuous elevation even if the road profile changes.



**BRIDGE AREA
RETAINING
WALL PANEL
CONCEPTS**

The top of the walls have a cast-in-place cap feature. The joints or corner molds also are a cast in place vertical feature that connects the panels.

Dominant color



Bridge Girder



Ramp barrier color



TOWN OF
CASTLE ROCK
COLORADO
**INTERCHANGE
I-25 BRIDGE OVER PLUM CREEK
PARKWAY**



**FELSBURG
HOLT &
ULLEVIG**

FRANK MILTENBERGER
LANDSCAPE ARCHITECT

FM 10.11-07
SHEET 1 OF 3